



**WORLD LEADERS  
IN BOLUS  
TECHNOLOGY**



# TRACE ELEMENT BOLUSES FOR ADULT CATTLE

## BOLUS TECHNOLOGY

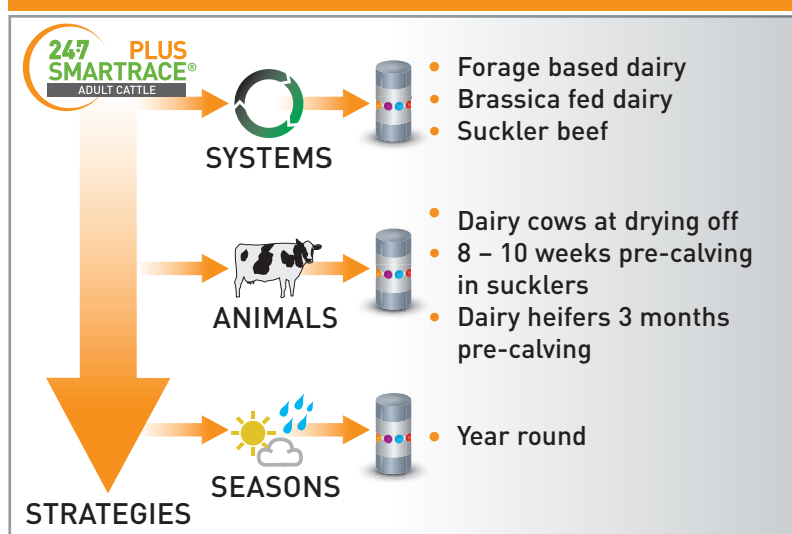


Three part bolus erodes releasing copper, iodine, cobalt and selenium

Wrapper dissolves in reticulum and bolus parts separate

ACTIVE COMPONENT	AVERAGE DAILY SUPPLY OVER 180 DAYS FROM 195 g BOLUS
Copper	140.0 mg
Iodine	23.0 mg
Cobalt	2.7 mg
Selenium	1.2 mg

## WHEN TO USE AGRIMIN 24·7 SMARTRACE® PLUS



## BENEFITS

- Eroding technology means consistent supply of trace elements
- Delivers full daily requirement of copper, iodine, cobalt and selenium
- Strong healthy calves
- Easier, cleaner calvings
- Optimise conception rates
- Reduced calving spread
- Approved by Organic Farmers & Growers
- Contains no GMOs or material of animal origin
- Active life 180 days**
- One 195 g bolus should be given to each animal**
- Pack size - 10 boluses**



**AGRIMIN LIMITED**

Arlanda Way, Humberside Airport, Kirmington, North Lincolnshire, DN39 6YH, UK

Tel: +44 (0) 1652 688046 | Email: [info@agrimin.co.uk](mailto:info@agrimin.co.uk) | [www.agrimin.co.uk](http://www.agrimin.co.uk)

