



**WORLD LEADERS  
IN BOLUS  
TECHNOLOGY**

# **PRODUCT GUIDE**





## ABOUT US...

**AGRIMIN LTD.** specialises in developing, manufacturing and marketing controlled and sustained release trace element, vitamin and mineral boluses for ruminants. The company has gained a reputation for technically advanced products, many of which have been developed in house and researched extensively in New Zealand.

Our bolus products are sold throughout Ireland by the animal health supply trade, including farm retailers, co-ops, merchants, pharmacies and veterinary surgeons. We have established significant export markets throughout Europe and in other developed agricultural economies. Farmers in countries as diverse as Iceland, New Zealand, Russia and Mexico are recognising the benefits our boluses can bring to their livestock.

## AGRIMIN BOLUSES

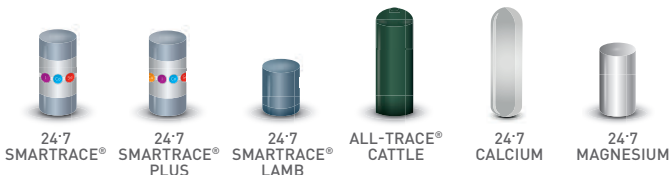
Helping you ...make the **right choice**  
...at the **right time** ...for the **right animal!**



# CONTROLLED & SUSTAINED RELEASE BOLUS TECHNOLOGY

Our bolus range encompasses different technologies, all of which are designed to deliver a controlled quantity of nutrients to an individual animal over a defined period of time.

All of our boluses are designed to dissolve completely, leaving the reticulum free of any bolus residue.



## THE BENEFITS OF BOLUSES

Farmers use boluses for a number of reasons:

**CERTAIN SUPPLY** - with our boluses, you know that each animal is receiving a consistent supply of nutrients. Variation of intake is a major issue with free access supplementation.

**SUSTAINED RELEASE** - our boluses give a genuinely sustained supply of nutrients, ensuring that animals are receiving supplementation every minute of every day of the active life of the product.

**LABOUR SAVING** - once administered, our boluses save the time and cost put into daily feeding or checking the availability of free access products.

**COST EFFECTIVE** - there is no waste with our boluses and costs compare very favourably with other forms of supplementation.



# TRACE ELEMENT BOLUSES FOR CALVES

## DESCRIPTION

A sustained release bolus containing copper, iodine, cobalt and selenium. Intended for ruminating calves over 6 weeks of age with a liveweight of 100-200 kg, on grass or forage-based diets.

**24-7 SMARTRACE® PLUS CALF** is designed for situations where iodine, cobalt and selenium supplementation is essential over the growing period and where additional copper is required.

**24-7 SMARTRACE® PLUS CALF** supplies the animal's full daily requirement of each essential trace element for 180 days.

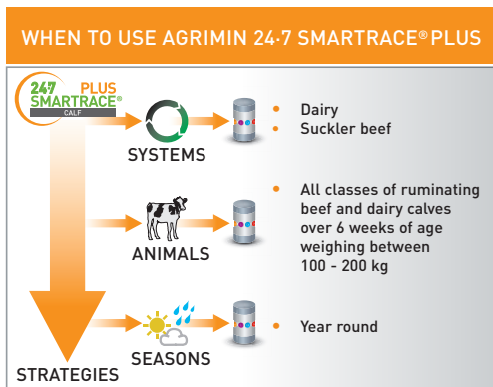
ACTIVE COMPONENT	AVERAGE DAILY SUPPLY OVER 180 DAYS FROM 58 g BOLUS
Copper	46.7 mg
Iodine	4.2 mg
Cobalt	0.8 mg
Selenium	0.4 mg

## BENEFITS

- Eroding technology means consistent supply of trace elements
- Delivers full daily requirement of copper, iodine, cobalt and selenium
- Optimise growth rates
- Helps maintain condition
- Contains no GMOs or material of animal origin
- Active life 180 days

## ADMINISTRATION

- **One 58 g bolus should be given to each animal**
- **Always use the approved Agrimin cattle bolus applicator B**
- **Pack size - 20 boluses**





# TRACE ELEMENT BOLUSES FOR GROWING CATTLE

## DESCRIPTION

A sustained release bolus containing iodine, cobalt and selenium. Intended for growing cattle on grass or forage based diets with a liveweight of 200-400 kg.

**24-7 SMARTRACE® GROWING CATTLE** is designed for situations where iodine, cobalt and selenium supplementation is essential for efficient growth, optimum health and fertility but where additional copper is not required.

**24-7 SMARTRACE® GROWING CATTLE** supplies the animal's full daily requirement of each essential trace element for 180 days.

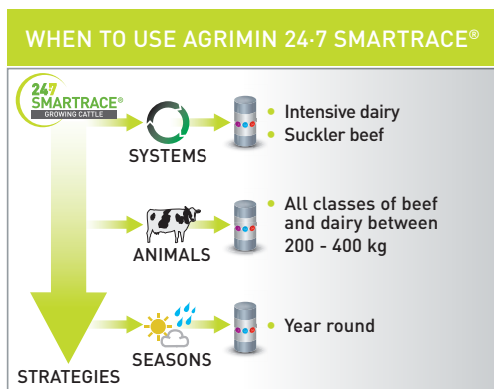
ACTIVE COMPONENT	AVERAGE DAILY SUPPLY OVER 180 DAYS FROM 130 g BOLUS
Iodine	18.7 mg
Cobalt	2.2 mg
Selenium	1.0 mg

## BENEFITS

- Eroding technology means consistent supply of trace elements
- Delivers full daily requirement of iodine, cobalt and selenium
- Free of copper – important for closely managed dairy cows
- Approved by Organic Farmers & Growers
- Contains no GMOs or material of animal origin
- Active life 180 days

## ADMINISTRATION

- One 130 g bolus should be given to each animal
- Always use the approved Agrimin cattle bolus applicator A
- Pack size - 10 boluses



# TRACE ELEMENT BOLUSES FOR GROWING CATTLE

## DESCRIPTION

A sustained release bolus containing copper, iodine, cobalt and selenium. Intended for growing cattle on grass or forage based diets with a liveweight of 200-400 kg.

**24-7 SMARTRACE® PLUS GROWING CATTLE** is designed for situations where iodine, cobalt and selenium supplementation is essential for efficient growth, optimum health and fertility and where additional copper is required.

**24-7 SMARTRACE® PLUS GROWING CATTLE** supplies the animal's full daily requirement of each essential trace element for 180 days.

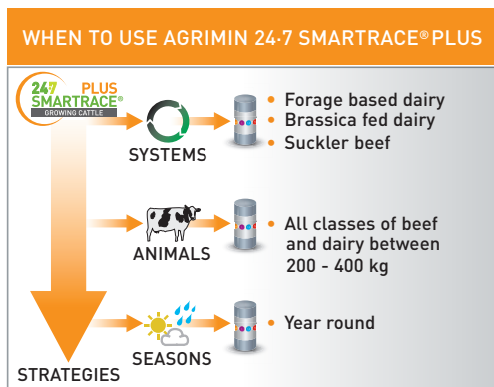
ACTIVE COMPONENT	AVERAGE DAILY SUPPLY OVER 180 DAYS FROM 150 g BOLUS
Copper	93.3 mg
Iodine	18.7 mg
Cobalt	2.2 mg
Selenium	1.0 mg

## BENEFITS

- Eroding technology means consistent supply of trace elements
- Delivers full daily requirement of copper, iodine, cobalt and selenium
- Approved by Organic Farmers & Growers
- Contains no GMOs or material of animal origin
- Active life 180 days

## ADMINISTRATION

- One 150 g bolus should be given to each animal
- Always use the approved Agrimin cattle bolus applicator A
- Pack size - 10 boluses



SMARTRACE® is a registered trademark of Agrimin Ltd.

# TRACE ELEMENT BOLUSES FOR ADULT CATTLE

## DESCRIPTION

A sustained release bolus containing iodine, cobalt and selenium.  
Intended for adult cattle on grass or forage based diets with a liveweight over 400 kg.

**24-7 SMARTRACE® ADULT CATTLE** is designed for situations where iodine, cobalt and selenium supplementation is essential in the run up to calving and service where additional copper is not required.

**24-7 SMARTRACE® ADULT CATTLE** supplies the animal's full daily requirement of each essential trace element for 180 days.

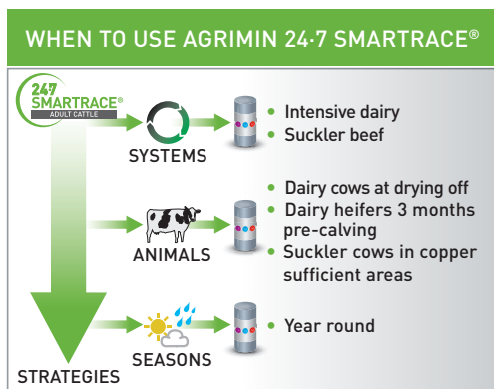
ACTIVE COMPONENT	AVERAGE DAILY SUPPLY OVER 180 DAYS FROM 160 g BOLUS
Iodine	23.0 mg
Cobalt	2.7 mg
Selenium	1.2 mg

## BENEFITS

- Eroding technology means consistent supply of trace elements
- Delivers full daily requirement of iodine, cobalt and selenium
- Free of copper – important for closely managed dairy cows
- Strong healthy calves
- Easier, cleaner calvings
- Optimise conception rates
- Reduced calving spread
- Approved by Organic Farmers & Growers
- Contains no GMOs or material of animal origin
- Active life 180 days

## ADMINISTRATION

- One 160 g bolus should be given to each animal
- Always use the approved Agrimin cattle bolus applicator A
- Pack size - 10 boluses



SMARTRACE® is a registered trademark of Agrimin Ltd.



# TRACE ELEMENT BOLUSES FOR ADULT CATTLE

## DESCRIPTION

A sustained release bolus containing copper, iodine, cobalt and selenium. Intended for adult cattle on grass or forage based diets with a liveweight over 400 kg.

**24-7 SMARTRACE® PLUS ADULT CATTLE** is designed for situations where iodine, cobalt and selenium supplementation is essential in the run up to calving and service and where additional copper is required.

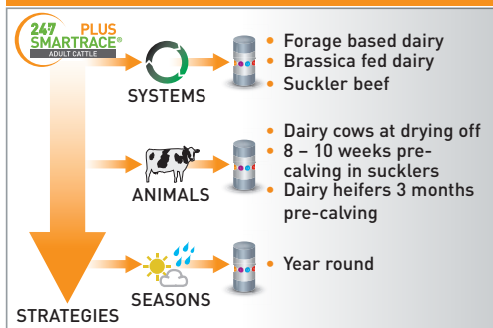
**24-7 SMARTRACE® PLUS ADULT CATTLE** supplies the animal's full daily requirement of each essential trace element for 180 days.

ACTIVE COMPONENT	AVERAGE DAILY SUPPLY OVER 180 DAYS FROM 195 g BOLUS
Copper	140.0 mg
Iodine	23.0 mg
Cobalt	2.7 mg
Selenium	1.2 mg

## BENEFITS

- Eroding technology means consistent supply of trace elements
- Delivers full daily requirement of copper, iodine, cobalt and selenium
- Strong healthy calves
- Easier, cleaner calvings
- Optimise conception rates
- Reduced calving spread
- Approved by Organic Farmers & Growers
- Contains no GMOs or material of animal origin
- Active life 180 days

## WHEN TO USE AGRIMIN 24-7 SMARTRACE® PLUS



## ADMINISTRATION

- One 195 g bolus should be given to each animal
- Always use the approved Agrimin cattle bolus applicator A
- Pack size - 10 boluses



SMARTRACE® is a registered trademark of Agrimin Ltd.



# TRACE ELEMENT BOLUSES FOR LAMBS

## DESCRIPTION

A sustained release bolus specifically designed for lambs, containing iodine, cobalt and selenium. Intended for ruminating lambs with a liveweight over 25 kg.

**24-7 SMARTRACE® LAMB** is designed for situations where iodine, cobalt and selenium supplementation is essential for growing, ruminating lambs to help maintain and maximise growth rates, ensuring strong vital lambs.

**24-7 SMARTRACE® LAMB** supplies the animal's full daily requirement of each essential trace element for 120 days.

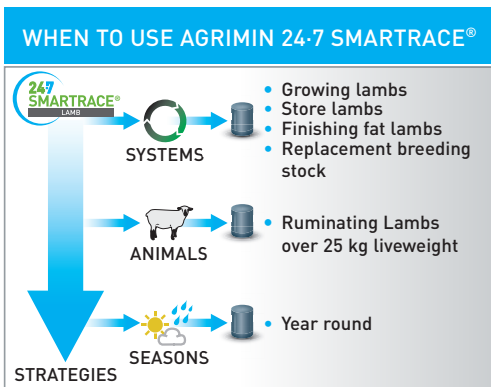
ACTIVE COMPONENT	AVERAGE DAILY SUPPLY OVER 120 DAYS FROM 2 x 6 g BOLUSES
Iodine	0.9 mg
Cobalt	0.8 mg
Selenium	0.2 mg

## BENEFITS

- Eroding technology means consistent supply of trace elements
- Delivers full daily requirement of iodine, cobalt and selenium
- Free of copper – OK for use in continental breeds
- Helps maintain lamb growth from weaning
- Promotes strong healthy lambs
- Approved by Organic Farmers & Growers
- Contains no GMOs or material of animal origin
- Active life 120 days

## ADMINISTRATION

- 2 x 6 g boluses should be given to each animal
- Always use the approved Agrimin lamb bolus applicator C
- Pack size - 200 boluses (enough for 100 lambs)



# TRACE ELEMENT BOLUSES FOR ADULT SHEEP

## DESCRIPTION

A sustained release bolus containing iodine, cobalt and selenium. Intended for adult sheep, gimmers and hogs with a liveweight over 40 kg.

**24-7 SMARTRACE® ADULT SHEEP** is designed for situations where iodine, cobalt and selenium supplementation is essential in the run up to tupping, at scanning or over-wintering. It can also be given to rams in advance of the mating season.

**24-7 SMARTRACE® ADULT SHEEP** supplies the animal's full daily requirement of each essential trace element for 180 days.

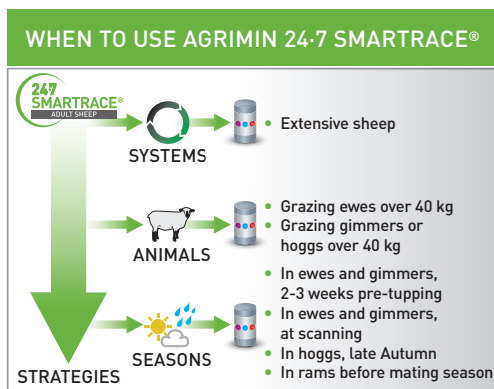
ACTIVE COMPONENT	AVERAGE DAILY SUPPLY OVER 180 DAYS FROM 48 g BOLUS
Iodine	4.2 mg
Cobalt	0.8 mg
Selenium	0.4 mg

## BENEFITS

- Eroding technology means consistent supply of trace elements
- Delivers full daily requirement of iodine, cobalt and selenium
- Free of copper – OK for use in continental breeds
- Helps maintain ewe health through winter
- Optimise lambing percentages
- Helps maintain lamb vitality
- Approved by Organic Farmers & Growers
- Contains no GMOs or material of animal origin
- Active life 180 days

## ADMINISTRATION

- One 48 g bolus should be given to each animal
- Always use the approved Agrimin sheep bolus applicator A
- Pack size - 50 boluses



# TRACE ELEMENT BOLUSES FOR ADULT SHEEP

## DESCRIPTION

A sustained release bolus containing copper, iodine, cobalt and selenium. Intended for adult sheep, gimmers and hogs with a liveweight over 40 kg.

**24-7 SMARTRACE® PLUS ADULT SHEEP** is designed for situations where copper, iodine, selenium and cobalt supplementation is essential in the run up to tupping, at scanning or over-wintering. Can also be given to rams in advance of the mating season. Do not use this product in breeds susceptible to copper toxicity or in sheep that may be housed for prolonged periods and fed concentrates. If in doubt, consult your veterinary surgeon or nutritionist.

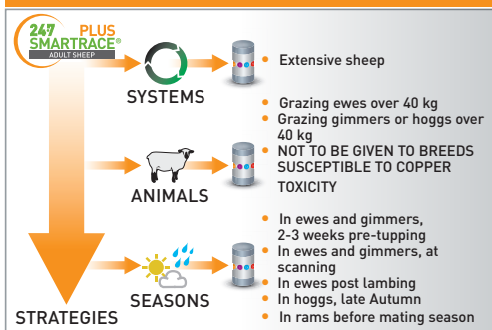
**24-7 SMARTRACE® PLUS ADULT SHEEP** supplies the animal's full daily requirement of each essential trace element for 180 days.

ACTIVE COMPONENT	AVERAGE DAILY SUPPLY OVER 180 DAYS FROM 52 g BOLUS
Copper	18.7 mg
Iodine	4.2 mg
Cobalt	0.8 mg
Selenium	0.4 mg

## BENEFITS

- Eroding technology means consistent supply of trace elements
- Delivers full daily requirement of copper, iodine, cobalt and selenium
- Helps maintain ewe health through winter
- Optimise lambing percentages
- Helps maintain lamb vitality
- Approved by Organic Farmers & Growers
- Contains no GMOs or material of animal origin
- Active life 180 days

## WHEN TO USE AGRIMIN 24-7 SMARTRACE® PLUS



## ADMINISTRATION

- One 52 g bolus should be given to each animal
- Always use the approved Agrimin sheep bolus applicator A
- Pack size - 50 boluses



SMARTRACE® is a registered trademark of Agrimin Ltd.



# TRACE ELEMENT BOLUSES FOR DAIRY COWS

## DESCRIPTION

A short term, sustained release bolus containing calcium.

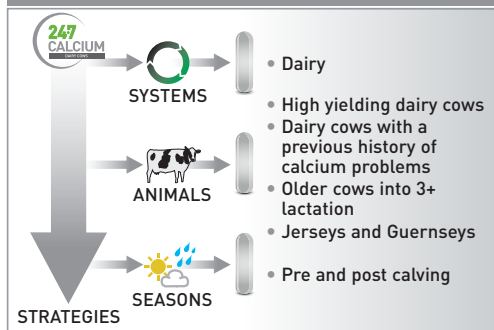
Intended for use in adult dairy cows over 400 kg liveweight, at calving.

ACTIVE COMPONENT	EACH 203 g BOLUS CONTAINS 43 g OF CALCIUM
Calcium Chloride (E509)	56%
Calcium Sulphate (E516)	23%

## BENEFITS

- Large supply of calcium – 43 g in each bolus
- Bolus dissolves and supplies calcium within 50 minutes of administration
- Calcium from bolus available as chloride (fast release) and sulphate (slow release) – peace of mind for the farmer
- None of the palatability problems associated with gels and pastes
- Can be used in conjunction with existing calcium supplementation regime

## WHEN TO USE AGRIMIN 24·7 CALCIUM



## ADMINISTRATION

### 1. Pre and post calving regime:

Administer one bolus at the first sign of calving.

Administer a second bolus 12-15 hours after the first bolus.

### 2. Post calving regime:

Administer one bolus immediately after calving (or after sub-cutaneous calcium injection).

Administer a second bolus 12-15 hours after the first bolus.

- Pack size - 12 boluses
- Always use the approved Agrimin cattle bolus applicator C.





# COPPER BOLUSES FOR CATTLE

## DESCRIPTION

A sustained release bolus containing 27 g copper oxide. Intended for growing cattle and breeding cows on grass or forage based diets.

**24-7 COPPER CATTLE** is designed for situations where soil and forage copper levels are low or where known copper antagonists such as molybdenum, iron and sulphur are high.

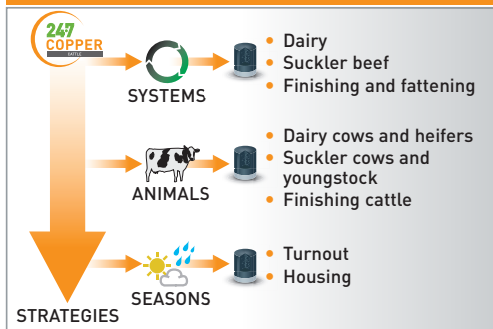
**24-7 COPPER CATTLE** supplies the animal's daily requirement of copper over a period of 180 days.

ACTIVE COMPONENT	EACH BOLUS CONTAINS
<b>Copper</b> (as copper oxide rods)	<b>23 g</b> (27 g copper oxide)

## BENEFITS

- Optimise growth rates in youngstock and finishing animals
- Optimise coat condition
- Easy to administer
- No capsule means no breakages or damage prior to or during administration
- Approved by Organic Farmers & Growers
- Contains no GMOs or material of animal origin
- Active life 180 days

## WHEN TO USE AGRIMIN 24-7 COPPER



## ADMINISTRATION

- **Ruminating cattle under 250 kg**  
- Administer one bolus
- **Cattle over 250 kg**  
- Administer one or two boluses
- **Always use the approved Agrimin cattle bolus applicator B**
- **Pack size**  
- 24 boluses





# COPPER CAPSULES FOR LAMBS

## DESCRIPTION

**24-7 COPPER LAMB** are long acting capsules for the oral administration of copper to ruminating lambs. Intended for ruminating lambs, with a liveweight over 20 kg, on grass or forage-based diets.

**24-7 COPPER LAMB** is designed for situations where soil and forage copper levels are low or where known copper antagonists such as molybdenum, iron and sulphur are high.

**24-7 COPPER LAMB** capsules are designed to maintain normal copper levels over the whole grazing season (approximately 6 months).

Do not use this product in breeds susceptible to copper toxicity or in lambs that may be housed for prolonged periods and fed concentrates. If in doubt, consult your veterinary surgeon or nutritionist.

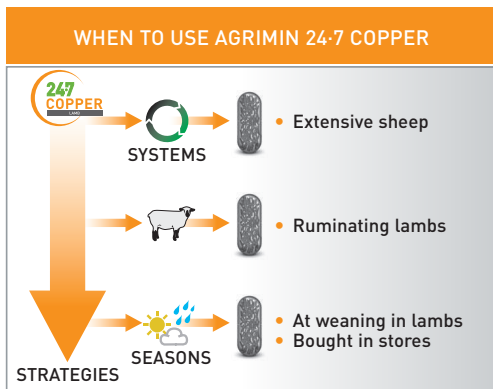
ACTIVE COMPONENT	EACH CAPSULE CONTAINS
<b>Copper</b> (as copper oxide rods)	<b>1.7 g</b> (2 g copper oxide)

## BENEFITS

- Optimise growth rates
- Optimise fleece condition
- Easy to administer
- Active life 180 days

## ADMINISTRATION

- **Ruminating lambs over 20 kg - one 2 g capsule**
- **Always use the approved Agrimin lamb bolus applicator D**
- **Pack size - 250 capsules**



# COPPER CAPSULES FOR SHEEP

## DESCRIPTION

**24·7 COPPER SHEEP** are long acting capsules for the oral administration of copper to sheep. Intended for adult sheep, with a liveweight over 40 kg, on grass or forage based diets.

**24·7 COPPER SHEEP** is designed for situations where soil and forage copper levels are low or where known copper antagonists such as molybdenum, iron and sulphur are high.

**24·7 COPPER SHEEP** capsules are designed to maintain normal copper levels over the whole grazing season (approximately 6 months).

Do not use this product in breeds susceptible to copper toxicity or in sheep that may be housed for prolonged periods and fed concentrates. If in doubt, consult your veterinary surgeon or nutritionist.

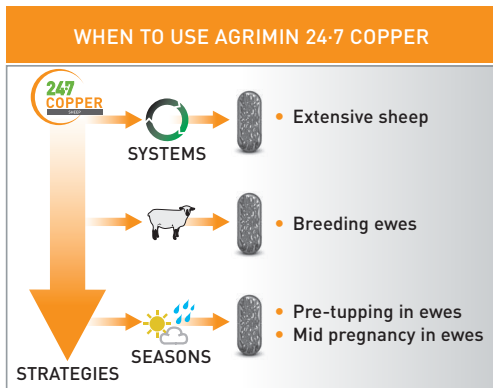
ACTIVE COMPONENT	EACH CAPSULE CONTAINS
<b>Copper</b> (as copper oxide rods)	<b>3.4 g</b> (4 g copper oxide)

## BENEFITS

- Optimise growth rates
- Optimise fleece condition
- Easy to administer
- Active life 180 days

## ADMINISTRATION

- **Adult sheep over 40 kg - one 4 g capsule**
- **Always use the approved Agrimin sheep bolus applicator B**
- **Pack size - 250 capsules**



# TRACE ELEMENT BOLUSES FOR CATTLE

## DESCRIPTION

A sustained release bolus containing 6 trace elements and 3 vitamins. Designed for grazing or forage fed livestock with a liveweight over 150 kg.

**ALL-TRACE® CATTLE** helps farmers manage the trace element status of their herd over critical periods of the production cycle.

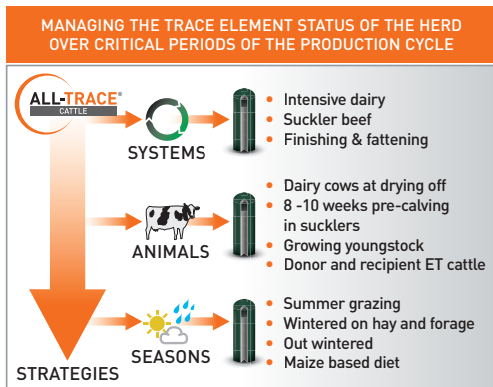
ACTIVE COMPONENT	AVERAGE DAILY SUPPLY OVER 240 DAYS FROM 2 BOLUSES
Copper	136.0 mg
Cobalt	2.0 mg
Iodine	4.4 mg
Manganese	70.5 mg
Selenium	2.1 mg
Zinc	114.1 mg
Vitamin A	3,725.0 IU
Vitamin D <sub>3</sub>	745.0 IU
Vitamin E	6.4 IU

## BENEFITS

- Optimise growth rates in youngstock
- Easier, cleaner calvings
- Strong healthy calves
- Reduced calving spread
- Optimise conception rates
- Optimise general condition
- Both boluses applied in one single, simple application
- Full range of trace elements
- Active life 240 days

## ADMINISTRATION

- **Administer 2 boluses per animal (over 150 kg)**
- **Always use the approved Agrimin cattle bolus applicator A**
- **Pack size - 20 boluses**



# TRACE ELEMENT BOLUSES FOR CATTLE

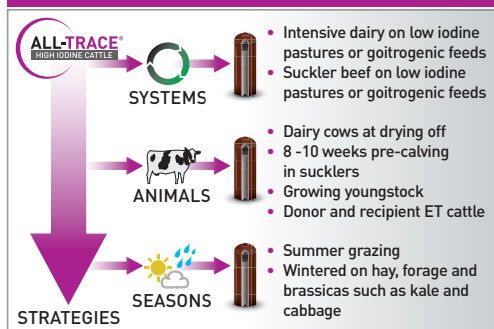
## DESCRIPTION

A sustained release bolus containing 6 trace elements and 3 vitamins. Designed for grazing or forage fed livestock with a liveweight over 150 kg where an imbalance of iodine affects animal productivity.

**ALL-TRACE® HIGH IODINE CATTLE** helps farmers manage the trace element status of their herd over critical periods of the production cycle.

ACTIVE COMPONENT	AVERAGE DAILY SUPPLY OVER 180 DAYS FROM 2 BOLUSES
Copper	175.1 mg
Cobalt	2.6 mg
<b>IODINE</b>	<b>19.2 mg</b>
Manganese	90.7 mg
Selenium	2.7 mg
Zinc	147.0 mg
Vitamin A	4,780.0 IU
Vitamin D <sub>3</sub>	956.0 IU
Vitamin E	8.2 IU

### MANAGING THE TRACE ELEMENT STATUS OF THE HERD OVER CRITICAL PERIODS OF THE PRODUCTION CYCLE



## BENEFITS

- Optimise growth rates in youngstock
- Easier, cleaner calvings
- Strong healthy calves
- Reduced calving spread
- Optimise conception rates
- Optimise general condition
- Both boluses applied in one single, simple application
- Full range of trace elements
- Active life 180 days

## ADMINISTRATION

- **Administer 2 boluses per animal (over 150 kg)**
- **Always use the approved Agrimin cattle bolus applicator A**
- **Pack size - 20 boluses**



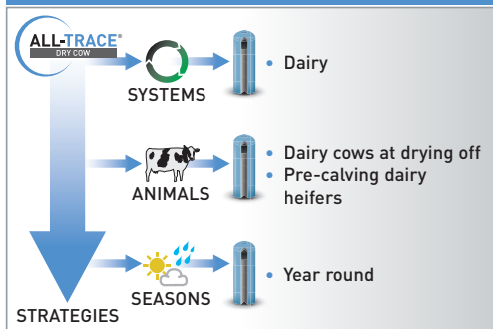
# TRACE ELEMENT BOLUSES FOR CATTLE

## DESCRIPTION

**ALL-TRACE® DRY COW** is a sustained release bolus containing 6 trace elements and 3 vitamins specifically formulated for the transition period.

ACTIVE COMPONENT	AVERAGE DAILY SUPPLY OVER 120 DAYS FROM 2 BOLUSES
Copper	96.9 mg
Cobalt	4.0 mg
Iodine	17.6 mg
Manganese	153.1 mg
Selenium	2.3 mg
Zinc	257.9 mg
Vitamin A	7,559.0 IU
Vitamin D <sub>3</sub>	1,512.0 IU
Vitamin E	19.5 IU

### MANAGING THE TRACE ELEMENT STATUS OF THE HERD OVER CRITICAL PERIODS OF THE PRODUCTION CYCLE



## BENEFITS

- Easier, cleaner calvings
- Strong, healthy calves
- Reduced calving spread
- Optimise conception rates
- Optimise general condition
- Both boluses applied in one single, simple application
- Cows can be given boluses at the same time as drying off routines such as hoof trimming and intramammary tubing
- Active life 120 days

## ADMINISTRATION

- **Administer 2 boluses per animal (over 400 kg)**
- **Always use the approved Agrimin cattle bolus applicator A**
- **Pack size - 20 boluses**



# TRACE ELEMENT BOLUSES FOR ORGANIC CATTLE

## DESCRIPTION

A sustained release bolus containing 6 trace elements. **ALL-TRACE® ORGANIC CATTLE** is approved by the Organic Farmers and Growers Association and is compliant with current EC standards.

Designed for organically reared, grazing or forage fed livestock with a liveweight over 150 kg.

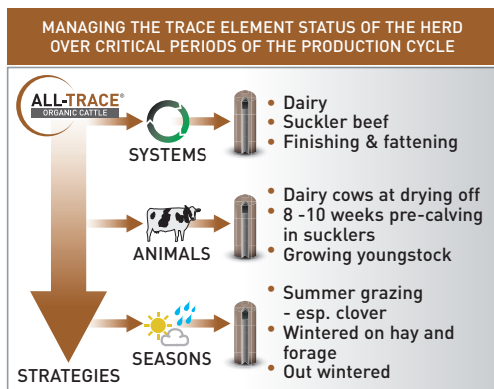
ACTIVE COMPONENT	AVERAGE DAILY SUPPLY OVER 180 DAYS FROM 2 BOLUSES
Copper	195.2 mg
Cobalt	2.9 mg
Iodine	6.3 mg
Manganese	101.1 mg
Selenium	3.0 mg
Zinc	163.8 mg

## BENEFITS

- Approved by Organic Farmers & Growers
- Contains no GMOs or material of animal origin
- Optimise growth rates in youngstock
- Easier, cleaner calvings
- Strong healthy calves
- Reduced calving spread
- Optimise conception rates
- Optimise general condition
- Both boluses applied in one single, simple application
- Active life 180 days

## ADMINISTRATION

- Administer 2 boluses per animal (over 150 kg)
- Always use the approved Agrimin cattle bolus applicator A
- Pack size - 20 boluses



ALL-TRACE® is a registered trademark of Agrimin Ltd.

# TRACE ELEMENT BOLUSES FOR CATTLE

## DESCRIPTION

In-vivo dissolution studies have shown that **ALL-TRACE® BIOTIN GOLD CATTLE** delivers the target level of 20 mg per head per day of biotin over 120 days. Not only this, **ALL-TRACE® BIOTIN GOLD CATTLE** will also deliver the full daily requirement of copper, cobalt, selenium and iodine and useful contributions of zinc, manganese and vitamins A, D<sup>3</sup> and E. Designed for grazing or forage fed dairy cows and heifers with a liveweight over 400 kg.

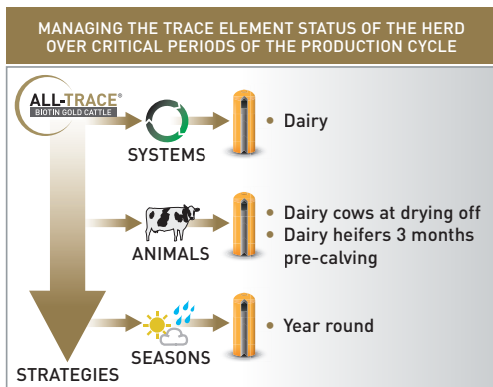
ACTIVE COMPONENT	AVERAGE DAILY SUPPLY OVER 120 DAYS FROM 2 BOLUSES
<b>BIOTIN</b>	<b>19.3 mg</b>
Copper	96.9 mg
Cobalt	4.0 mg
Iodine	17.6 mg
Manganese	153.1 mg
Selenium	2.4 mg
Zinc	257.7 mg
Vitamin A	7,553.0 IU
Vitamin D <sub>3</sub>	1,511.0 IU
Vitamin E	19.5 IU

## BENEFITS

- Delivers a target level of 20 mg per head per day of Biotin over 120 days
- Promotes hoof and horn strength
- Easier, cleaner calvings
- Strong healthy calves
- Reduced calving spread
- Optimise conception rates
- Optimise general condition
- Both boluses applied in one single, simple application
- Active life 120 days

## ADMINISTRATION

- **Administer 2 boluses per animal (over 400 kg)**
- **Always use the approved Agrimin cattle bolus applicator A**
- **Pack size - 20 boluses**





24·7 MAGNESIUM  
CATTLE

24·7 MAGNESIUM  
SHEEP/CALVES

# 24·7 MAGNESIUM FOR CATTLE AND SHEEP

## DESCRIPTION

A sustained release bolus containing an alloy of magnesium, copper and aluminium. Designed to reduce the risk of tetany (hypomagnesaemia) in cattle, sheep and ruminating calves grazing rapidly growing spring grass. **24·7 MAGNESIUM** helps farmers manage the magnesium status of their herd or flock over high risk periods.

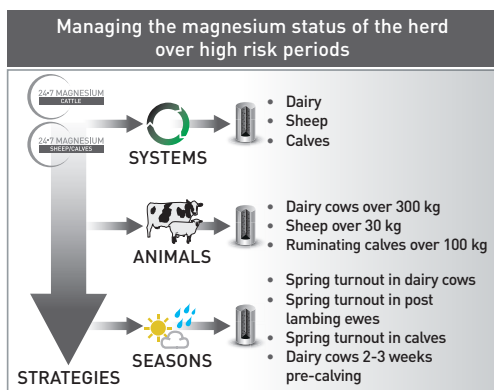
PRODUCT	ACTIVE LIFE	ADMINISTRATION
24·7 MAGNESIUM CATTLE	28 DAYS	2 BOLUSES
24·7 MAGNESIUM SHEEP	21 DAYS	1 BOLUS
24·7 MAGNESIUM CALVES	21 DAYS	2 BOLUSES

## BENEFITS

- A dietetic complementary feed for the reduction of the risk of tetany (hypomagnesaemia) in cattle, sheep and calves
- Certain supply of magnesium during high risk period
- Use pre calving to help boost magnesium intake
- Active life:  
Cattle - 28 days
- Active life: Sheep/  
Calves - 21 days

## ADMINISTRATION

- Dairy cows over 300 kg liveweight
- Sheep over 30 kg liveweight
- Ruminating calves over 100 kg liveweight
- Always use the approved Agrimin cattle bolus applicator A on 24·7 Magnesium Cattle, B on 24·7 Magnesium Calves and sheep bolus applicator A on 24·7 Magnesium Sheep
- Pack size:  
Cattle - 10 boluses
- Pack size: Sheep/  
Calves - 20 boluses





# COMPOSTABLE LIFE JACKETS FOR LAMBS

## DESCRIPTION

Lammacs are transparent jackets made from a fully compostable material known as Polycomp™. They provide protection against the elements for a newly born lamb and help prevent hypothermia which is the major cause of lamb mortality in temperate regions such as the UK.

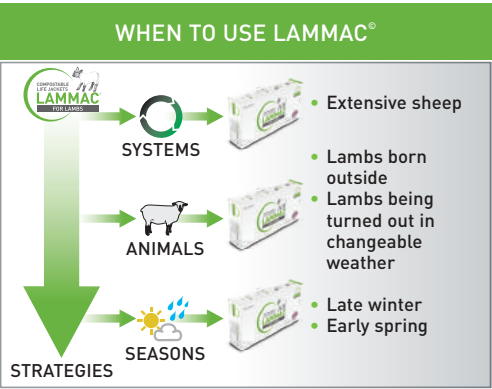
COLOUR	PACK SIZE	DESCRIPTION
STANDARD	100	Transparent jacket. Farmers can see mark on lambs through jacket.
LARGE	100	Transparent jacket. Farmers can see mark on lambs through jacket.

## BENEFITS

- Reduced risk of hypothermia
- Provide protection during un-forecast adverse weather
- No interference with mothering
- Protection provided for a few pence per head
- Reportedly less fox predation in lambs wearing jackets
- Fully compostable and biodegradable according to the European norm EN13432

## ADMINISTRATION

- Lambs should be covered as young as possible, preferably in the first 12 hours to minimise rejection by ewes with older lambs
- Designed to stay on the lamb for up to 72 hours
- Pack size - Units of 100



LAMMAC® is a registered trademark of Agrimin Ltd.

# TESTIMONIALS

" Blood tests showed that there were inconsistencies in selenium and copper and after talking to other farmers and our vet, we decided to use Agrimin's boluses, which even 25 years ago were technically advanced in the marketplace. These boluses provide an extremely efficient technology and are now a standard part of my herd management. "

**DAVID DUGDALE, NORTH YORKSHIRE**

" I think there's a lot in this whole area of micro-nutrition and supporting the animal at key stages of the breeding cycle,"Sion says "People tend to think of trace elements only being relevant if there is a deficiency, but if you can get the delivery side of things right, there's a growing body of evidence suggesting that maintaining the correct levels throughout the breeding cycle can produce distinct advantages too. "

**SION AND CLAIRE WILLIAMS, CARMARTHENSHIRE**

" Our problems arose from a coarse sandy soil over sandstone rock that can produce good pasture in spring and autumn but is droughty in the summer and has inherent mineral deficiencies. Having decided to use Agrimin's sustained release ALL-TRACE® HIGH IODINE boluses we have seen in the last year a reduction in retained placentas from 20% to just 2% and numerous health and fertility benefits. This has convinced me that I now have the upper hand. "

**ROB TAVERNER, DEVON**

" Although there are no specific trace element problems known on any of the land used, ensuring all ewes have adequate levels of key trace elements at all times throughout the breeding cycle is a critical part of the system. From just available grazing and by-product feeds supported by a cobalt, iodine and selenium trace element bolus last year we had less barren ewes, the sheep were fitter despite being on very poor grazing and I reckon we saw a 15 - 20% improvement in lambing percentage overall. For a pound a bolus I reckon that's pretty good going, particularly when you can spend £1000 very easily on bagged minerals and not know which, if any, animals are getting enough. "

**PHILIP WEAVER, NOTTINGHAMSHIRE**

# BOLUS APPLICATOR IDENTIFICATION



## 3 YEAR GUARANTEE

We offer a 3 year guarantee for all our in-house designed and built applicators. Details of the guarantee will be supplied with every applicator sold.

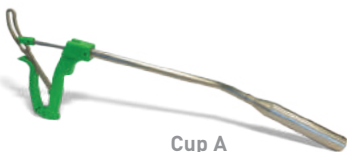
### AGRIMIN CATTLE BOLUS APPLICATOR A

#### USE WITH:

- 24·7 SMARTRACE® GROWING CATTLE
- 24·7 SMARTRACE® PLUS GROWING CATTLE
- 24·7 SMARTRACE® ADULT CATTLE
- 24·7 SMARTRACE® PLUS ADULT CATTLE
- ALL-TRACE® CATTLE
- ALL-TRACE® HIGH IODINE
- ALL-TRACE® DRY COW
- ALL-TRACE® ORGANIC
- ALL-TRACE® BIOTIN GOLD
- 24·7 MAGNESIUM CATTLE



Only for use in cattle weighing over 150 kg



Cup A

### AGRIMIN CATTLE BOLUS APPLICATOR B

#### USE WITH:

- 24·7 SMARTRACE® PLUS CALF - 100-200 kg liveweight
- 24·7 COPPER CATTLE - over 150 kg liveweight
- 24·7 MAGNESIUM CALVES - over 100 kg liveweight

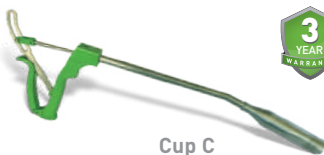


### AGRIMIN CATTLE BOLUS APPLICATOR C

#### USE WITH:

- 24·7 CALCIUM DAIRY COWS

Only for use in cattle weighing over 400 kg



Cup C

Please note: Cups A and C are interchangeable.

Care should always be taken when bolusing. ALWAYS refer to the applicator instructions provided. If unsure contact Agrimin for further guidance.

## AGRIMIN SHEEP BOLUS APPLICATOR A

### USE WITH:

- 24·7 SMARTRACE® ADULT SHEEP
- 24·7 SMARTRACE® PLUS ADULT SHEEP
- 24·7 MAGNESIUM SHEEP



Only for use in sheep weighing over 40 kg



Cup A

## AGRIMIN SHEEP BOLUS APPLICATOR B

### USE WITH:

- 24·7 COPPER SHEEP

Only for use in sheep weighing over 40 kg



Cup B

## AGRIMIN LAMB BOLUS APPLICATOR C

### USE WITH:

- 24·7 SMARTRACE® LAMB

Only for use in lambs weighing over 25 kg



Cup C

Please note the screw on adaptor heads/cups are interchangeable, allowing for one Sheep/Lamb Bolus Applicator to be used for all of Agrimin's Sheep and Lamb product range.

## AGRIMIN LAMB BOLUS APPLICATOR D

### USE WITH:

- 24·7 COPPER LAMB

Only for use in lambs weighing over 20 kg



Care should always be taken when bolusing.  
ALWAYS refer to the applicator instructions provided.  
If unsure contact Agrimin for further guidance.

# TRIAL DATA

All of our boluses have been rigorously researched and then tested under practical farming conditions in a number of different countries. In most cases, the trials have been conducted independently and the results published in peer reviewed journals.



## CANADA

Maintaining copper levels in cattle bolused with ALL-TRACE® and grazing high molybdenum pasture.

## SCOTLAND

Lower somatic cell counts in cows given ALL-TRACE® at drying off.

## IRELAND

Copper and selenium responses in groups of beef cattle given ALL-TRACE® at grass.

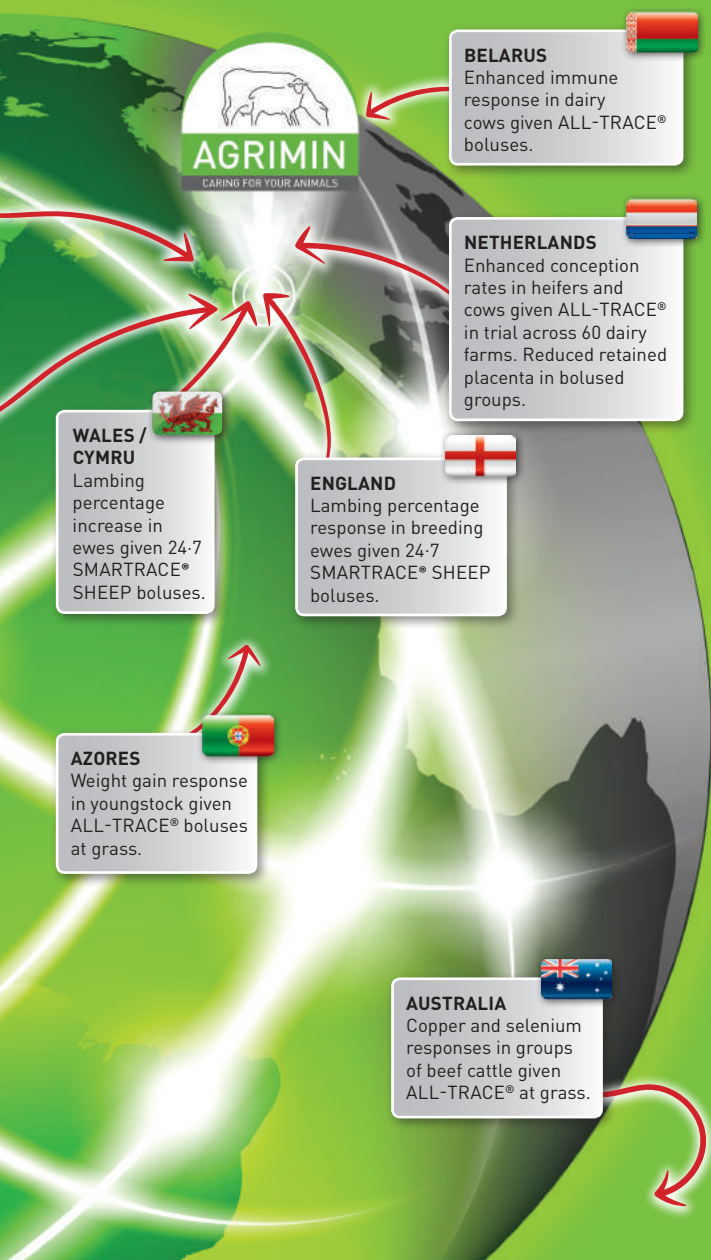
## MEXICO

Reduced still births and retained placentas in dry cows given ALL-TRACE®.

## NEW ZEALAND

Blood and liver copper and selenium responses in cattle given 24·7 SMARTRACE® PLUS boluses.

These trial results help prove the quality and efficacy of our product range and are available to anyone - please contact us for details or look at our website:  
[www.agrimin.co.uk](http://www.agrimin.co.uk)



# AGRIMIN SALES TEAM

## P.J.McGRATH

**Republic of Ireland Sales Manager**

T: 086 836 7778

E: [pjmcgrath@agrimin.com](mailto:pjmcgrath@agrimin.com)

## STEWART BAXTER

**Northern Ireland Sales Manager**

T: 07720 891746

E: [sbaxter@agrimin.co.uk](mailto:sbaxter@agrimin.co.uk)

## OLIVIA PARKIN

**Sales Support Manager**

T: 01652 688063

E: [oparkin@agrimin.co.uk](mailto:oparkin@agrimin.co.uk)



# INDEX

INTRODUCTION	2
BOLUS TECHNOLOGY	3
THE BENEFITS OF BOLUSES	3
AGRIMIN PRODUCTS	
24·7 SMARTRACE® PLUS CALF	4
24·7 SMARTRACE® GROWING CATTLE	5
24·7 SMARTRACE® PLUS GROWING CATTLE	6
24·7 SMARTRACE® ADULT CATTLE	7
24·7 SMARTRACE® PLUS ADULT CATTLE	8
24·7 SMARTRACE® LAMB	9
24·7 SMARTRACE® ADULT SHEEP	10
24·7 SMARTRACE® PLUS ADULT SHEEP	11
24·7 CALCIUM DAIRY COWS	12
24·7 COPPER CATTLE	13
24·7 COPPER LAMB	14
24·7 COPPER SHEEP	15
ALL-TRACE® CATTLE	16
ALL-TRACE® HIGH IODINE CATTLE	17
ALL-TRACE® DRY COW	18
ALL-TRACE® ORGANIC CATTLE	19
ALL-TRACE® BIOTIN GOLD CATTLE	20
24·7 MAGNESIUM CATTLE & SHEEP	21
LAMMAC®	22
INFORMATION	
TESTIMONIALS	23
BOLUS APPLICATOR IDENTIFICATION	24
TRIAL DATA	26
AGRIMIN SALES TEAM	28



CONTROLLED AND SUSTAINED  
RELEASE BOLUS TECHNOLOGY FOR  
**CATTLE AND SHEEP**

**AGRIMIN LTD.**

Arlanda Way,  
Humberside Airport,  
Kirmington,  
North Lincolnshire,  
DN39 6YH,  
UK

**T:** +44 (0) 1652 688046

**F:** +44 (0) 1652 688049

**E:** [info@agrimin.co.uk](mailto:info@agrimin.co.uk)

