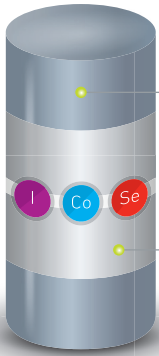




**WORLD LEADERS  
IN BOLUS  
TECHNOLOGY**



# TRACE ELEMENT BOLUSES FOR GROWING CATTLE



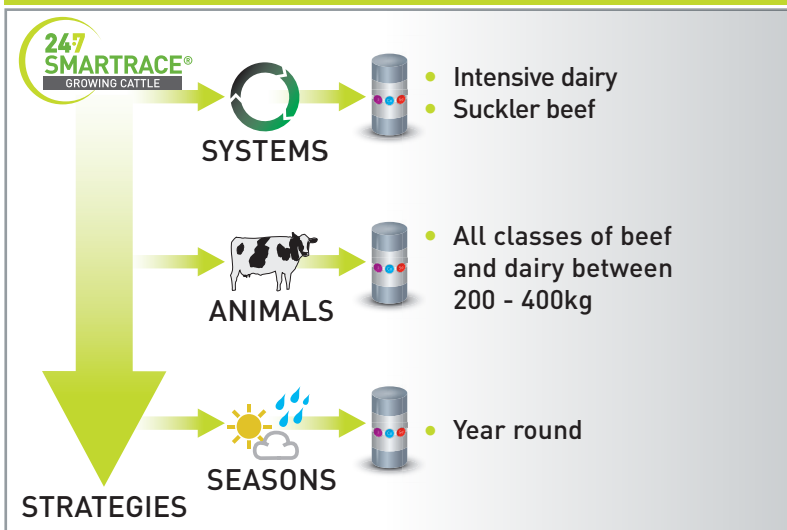
## BOLUS TECHNOLOGY

Two part bolus erodes releasing iodine, cobalt and selenium

Wrapper dissolves in reticulum and bolus parts separate

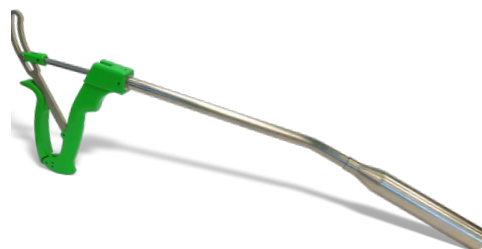
ACTIVE COMPONENT	AVERAGE DAILY SUPPLY OVER 180 DAYS FROM 130 g BOLUS
Iodine	18.7 mg
Cobalt	2.2 mg
Selenium	1.0 mg

## WHEN TO USE AGRIMIN 24-7 SMARTRACE®



## BENEFITS

- Eroding technology means consistent supply of trace elements
- Delivers full daily requirement of iodine, cobalt and selenium
- Free of copper – important for closely managed dairy cows
- Contains no GMOs or material of animal origin
- Active life 180 days**
- One 130 g bolus should be given to each animal**
- Pack size - 10 boluses**



**AGRIMIN LIMITED**

Arlanda Way, Humberside Airport, Kirmington, North Lincolnshire, DN39 6YH, UK

Tel: +44 (0) 1652 688046 | Email: [info@agrmin.co.uk](mailto:info@agrmin.co.uk) | [www.agrmin.co.uk](http://www.agrmin.co.uk)

